

Oregon Federal Lands Access Program Federal Highways Administration

“Improve access to federal lands”

Project:
**Detroit Area
Visitor Portal and
Day Use
Enhancements**

Joint Applicants:
**City of Detroit
and Forest
Service**



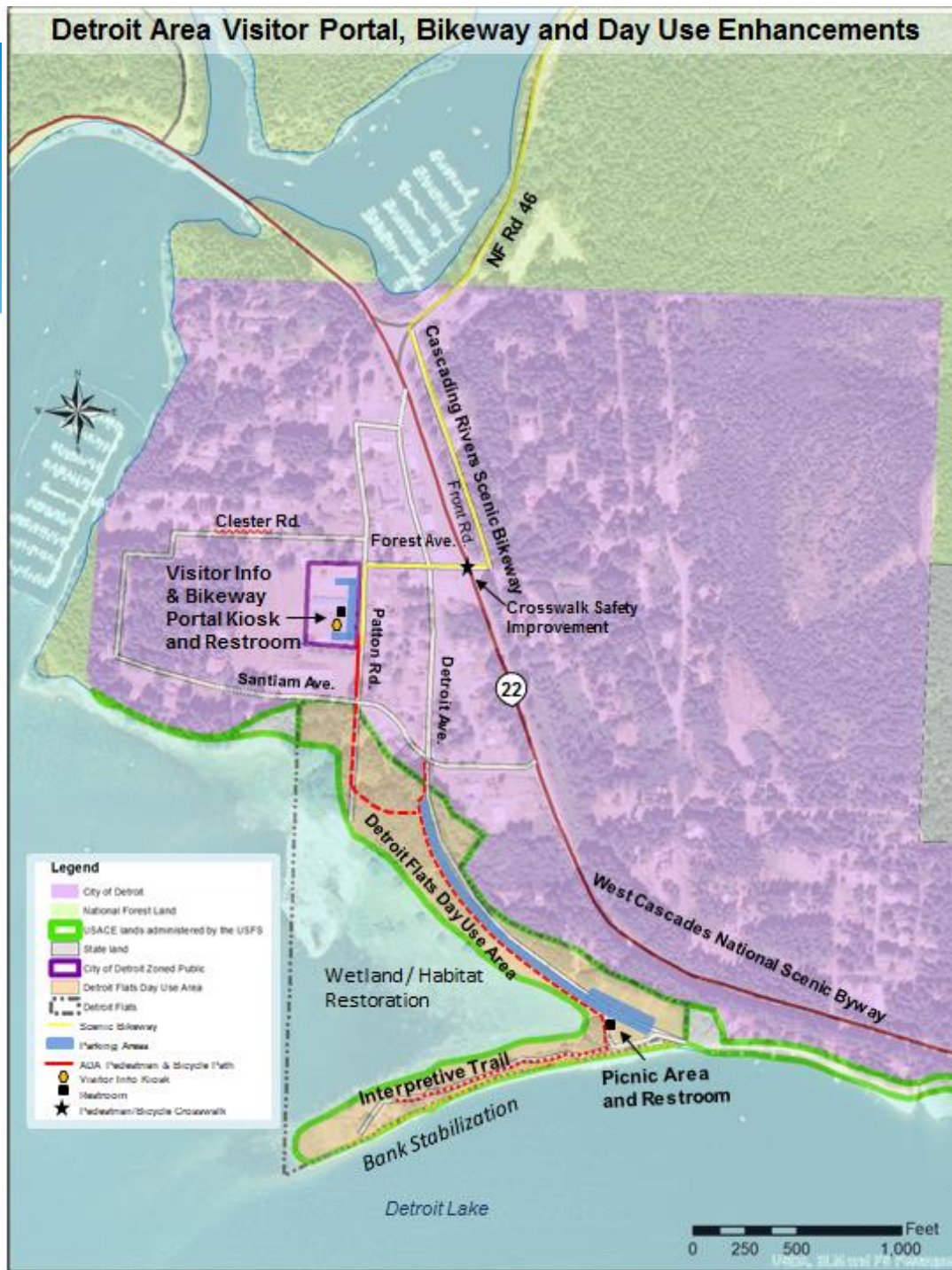
Builds on long-term, sustained involvement by many partners:

- * City of Detroit
- * Forest Service (Willamette/Mt. Hood NFs)
- * Detroit Lake Recreation Area Business Association
- * Federal Lakes Committee for Detroit Lake
- * Oregon Parks and Recreation Dept.
- * University of Oregon
- * Estacada Development Assoc.
- * Mid-Willamette Valley Council of Governments
- * North Santiam Watershed Council
- * ODOT
- * Oregon Army National Guard
- * Army Corps of Engineers

Extensive public engagement through various planning efforts:

- Detroit Comprehensive Plan (1978; amended 2002, 2009)
- City of Detroit Transportation System Plan (2009)
- Detroit Downtown Development Plan (2000)
- City of Detroit Former Elementary Site Park Plan (2013)
- Cascading Rivers Bikeway Plan (2014).
- West Cascades National Scenic Byway Corridor Plan (2007)
- Detroit Lake Recreation Area Composite Management Guide (1994)
- Detroit Lake Restoration and Enhancement Design (2011)
- Canyon Journeys - Alternative Transportation Link Feasibility Study (2004)

Detroit Area Visitor Portal, Bikeway and Day Use Enhancements



- Legend**
- City of Detroit
 - National Forest Land
 - USACE lands administered by the USFS
 - State land
 - City of Detroit Zoned Public
 - Detroit Flats Day Use Area
 - Detroit Flats
 - Scenic Bikeway
 - Parking Areas
 - ADA Pedestrian & Bicycle Path
 - Visitor Info Kiosk
 - Restroom
 - Pedestrian/Bicycle Crosswalk



Former Elementary School Property City of Detroit

Construct the Detroit Recreation Area
Portal for bikeway and supporting area tourism

- * Visitor kiosk and information panels
- * Parking
- * Flush restrooms
- * Cyclist and visitor amenities.
- * Paved pedestrian/bicycle path to Detroit Flats Day Use Area
- * Enhanced pedestrian/bicycle safety crosswalk on on Highway 22
- * Bikeway signing connects Rd 46 to the Portal



Detroit Flats



UO conceptual design elements:

- Day use facility improvements
- Habitat restoration and enhancement
- Bank stabilization

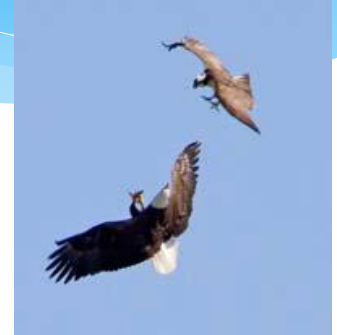
Recreation Facilities

- * Interpretation on wildlife and habitat (eg. migratory birds, bald eagle), old town of Detroit
- * Improve and construct ADA paths.
- * Improve parking areas.
- * Bird viewing and fishing areas
- * Picnic sites
- * Permanent vault toilet



Habitat Restoration and Enhancement

- * Upper N. Santiam Watershed Action Plan priority project
- * *Opportunities for stewardship projects!*
- * Plant native species that support wildlife, eg. migratory songbirds, waterfowl, eagle and osprey
- * Create wildlife “islands” and structures such as down logs and snags for roosting, nesting
- * Reduce invasive species (scotchbroom, blackberry, knotweed)



Spot the Bald Eagle...



Habitat Restoration and Enhancement

- * Shoreline stabilization to support species and protect marsh/grassland habitat

