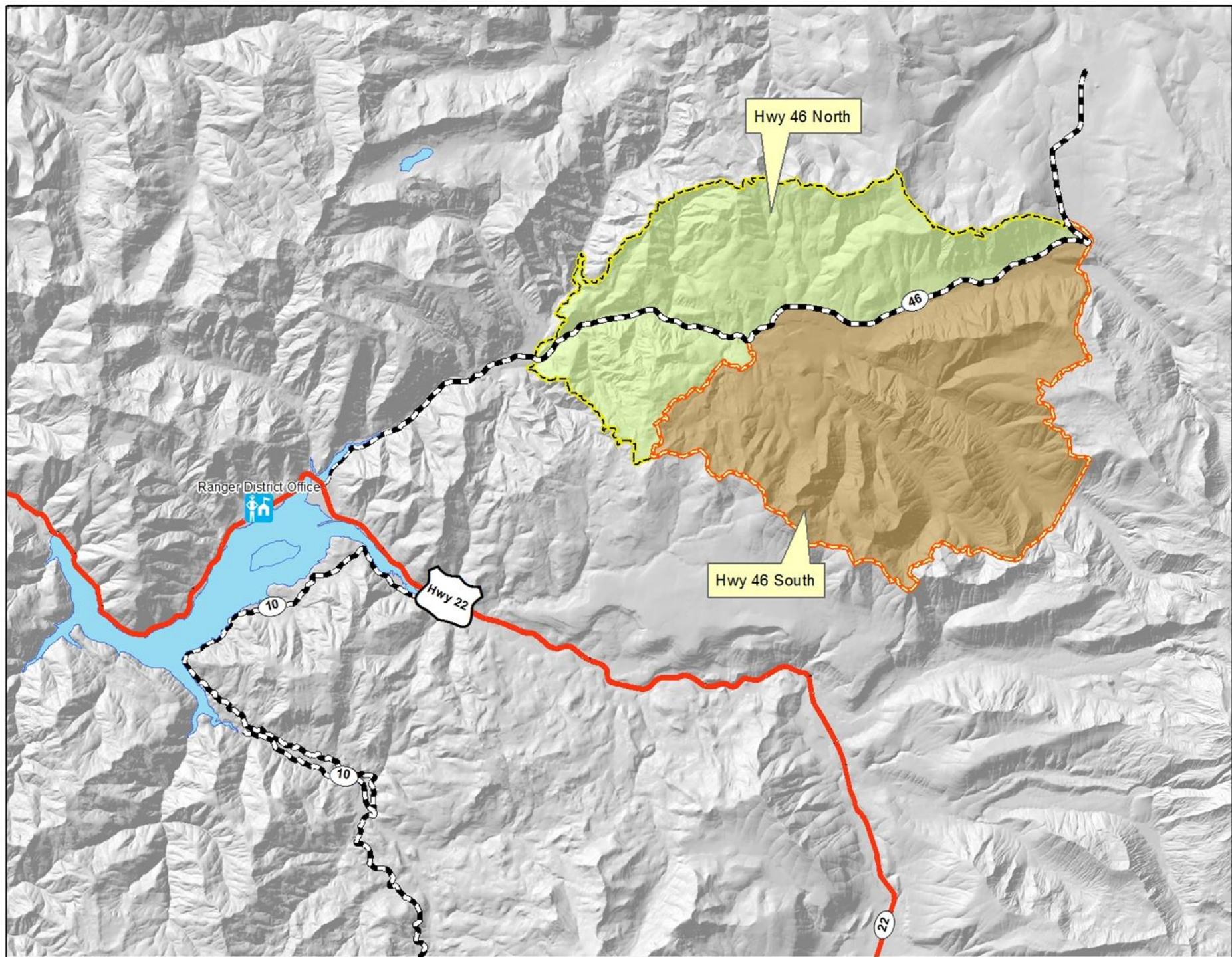


Highway 46 North

Vegetation Management





Ranger District Office

Hwy 46 North

Hwy 46 South

10

Hwy 22

46

10

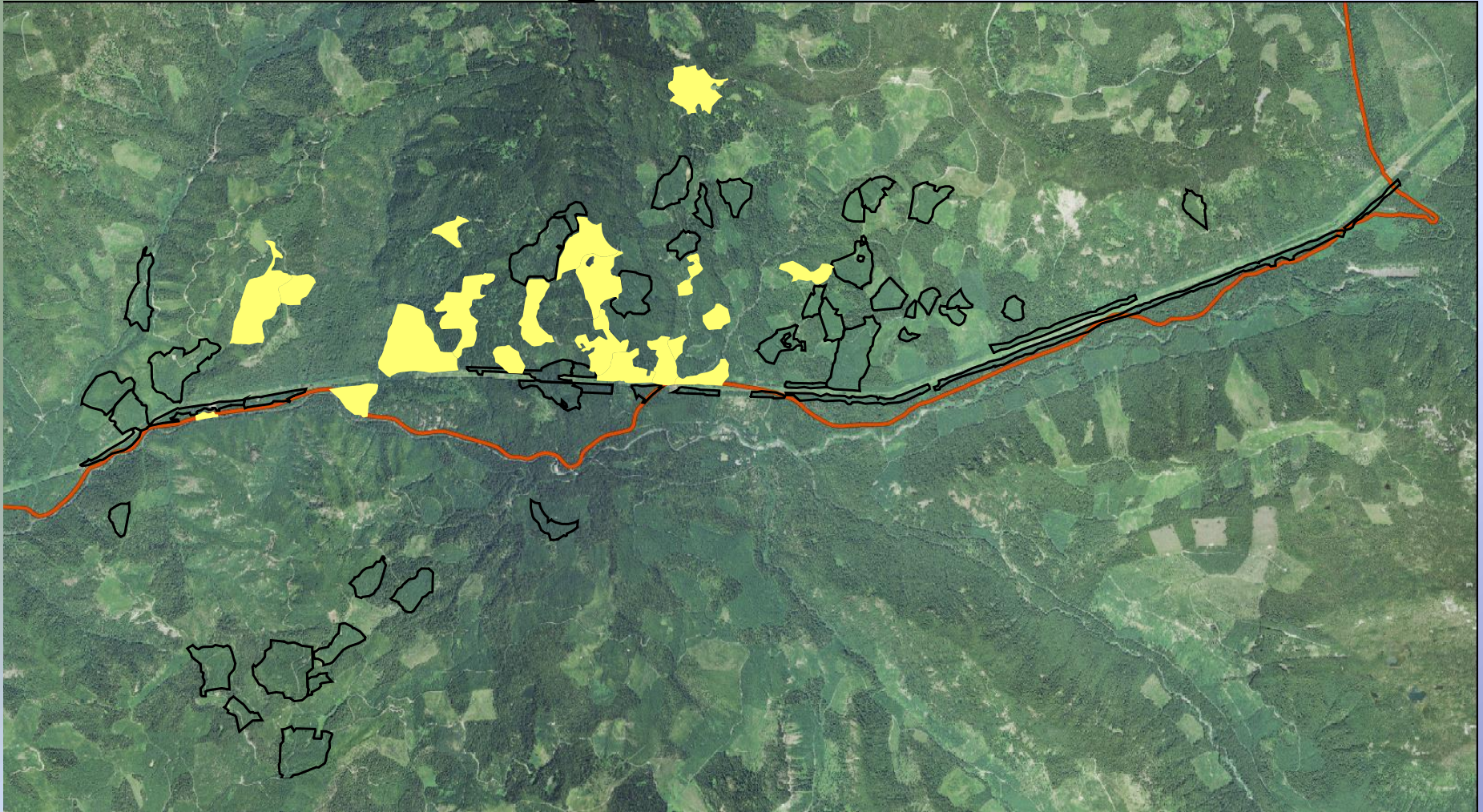
22



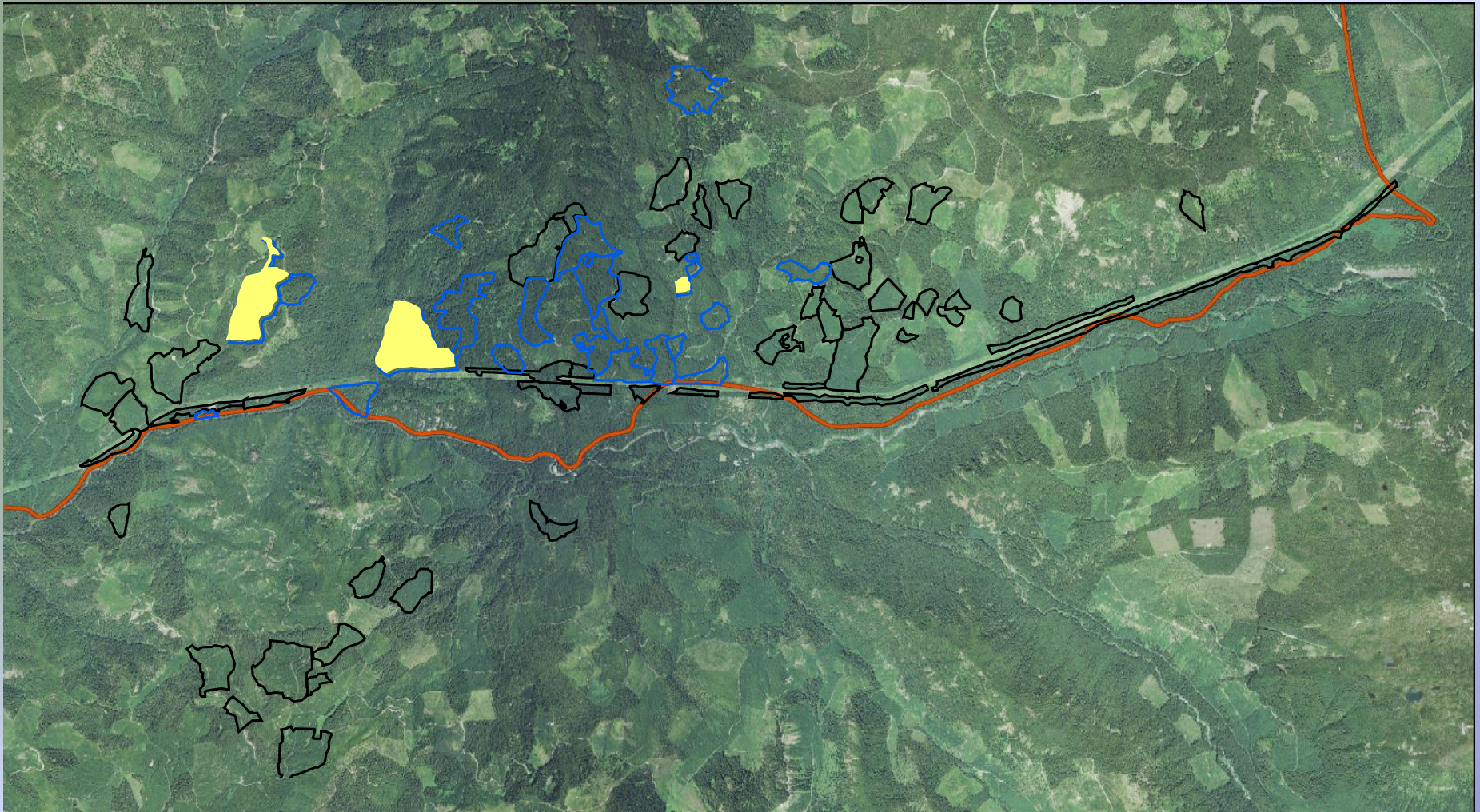
Plantations



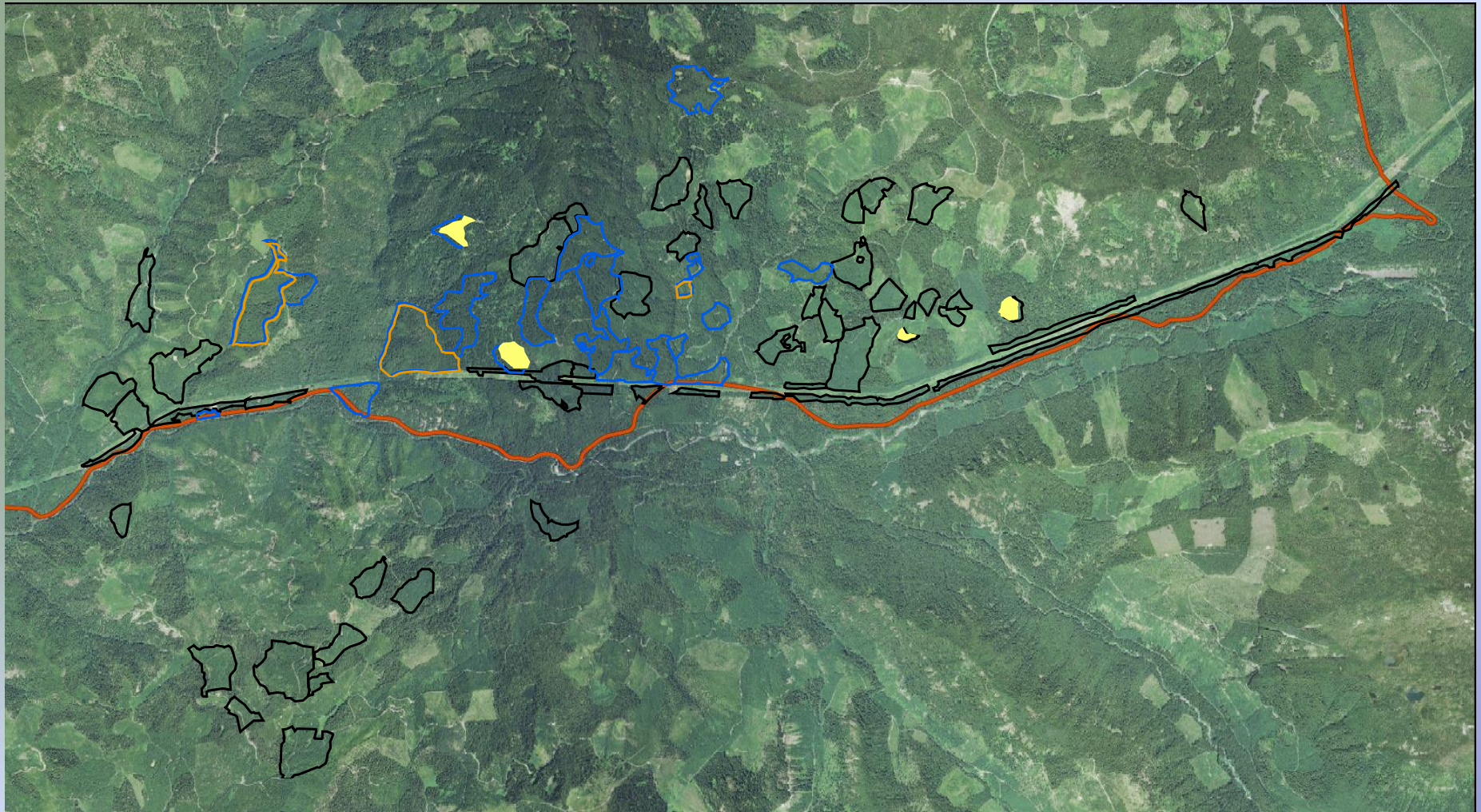
Fire Regenerated Stands



Sugar Pine Restoration



Early Seral Habitat



Plantations

- Stands 30 to 60 years old
- Thin to 70 to 90 trees per acre
- Designation by Description (DxD) leaves largest trees spaced across unit
- Skips, gaps, and dominant tree release in suitable areas to add to structural diversity
- Planting of under-represented species in gaps

Fire Regenerated Stands

- Burned 95 to 120 years ago
- Thin to 50 to 70 trees per acre of larger trees
- DxD or Individual Tree Mark
- Skips, gaps, and dominant tree release in suitable areas to enhance big game habitat and increase structural diversity

Sugar Pine Restoration



Precommercial thin release



Heavy thin, burn, natural regeneration



Heavy thin, burn, plant rust resistant SP



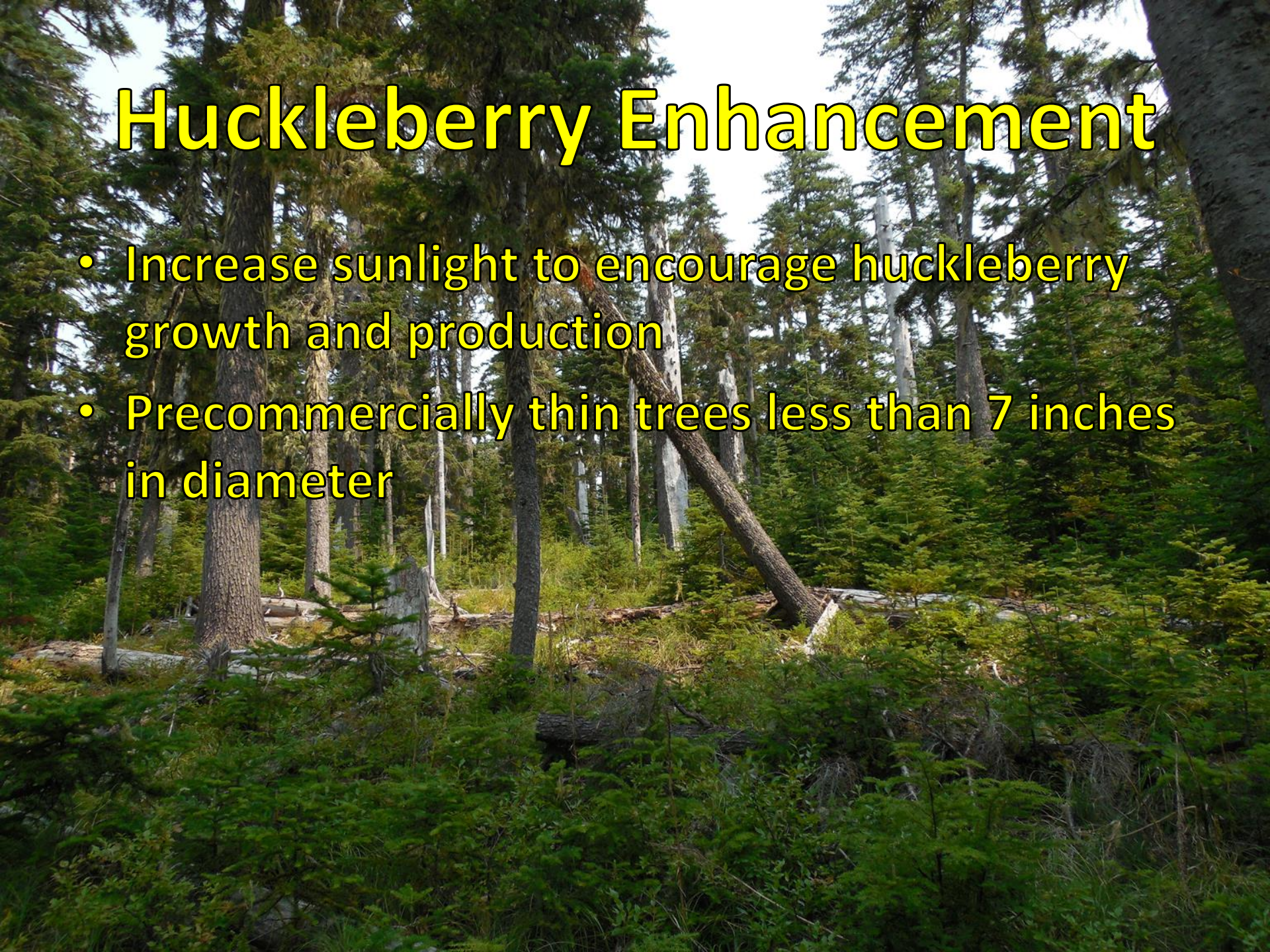
Large gaps, plant rust resistant SP

Early Seral Habitat

- Restoration of quality early seral
- Regeneration cut with 15% retention
- Location based on habitat type, slope, and position in landscape

Huckleberry Enhancement

- Increase sunlight to encourage huckleberry growth and production
- Precommercially thin trees less than 7 inches in diameter



Special Habitat Enhancement and Restoration

There are several sites throughout the current timber sale that contain meadows and special habitats. We are currently surveying these.