



GOAL 5 RIPARIAN CORRIDOR PLANNING PROJECT Phase 1 – Inventory

Natural Resources Planning Section

Public Works Department

November 21, 2023

What is Goal 5?

- ❖ One of 19 Statewide Planning Goals
- ❖ Adopted 1973
- ❖ Concerns about rapid growth impacting:
 - ❖ livability of communities
 - ❖ environment and natural resources
 - ❖ industries
- ❖ City Council directed City Staff to work on Goal 5 riparian corridor inventory process

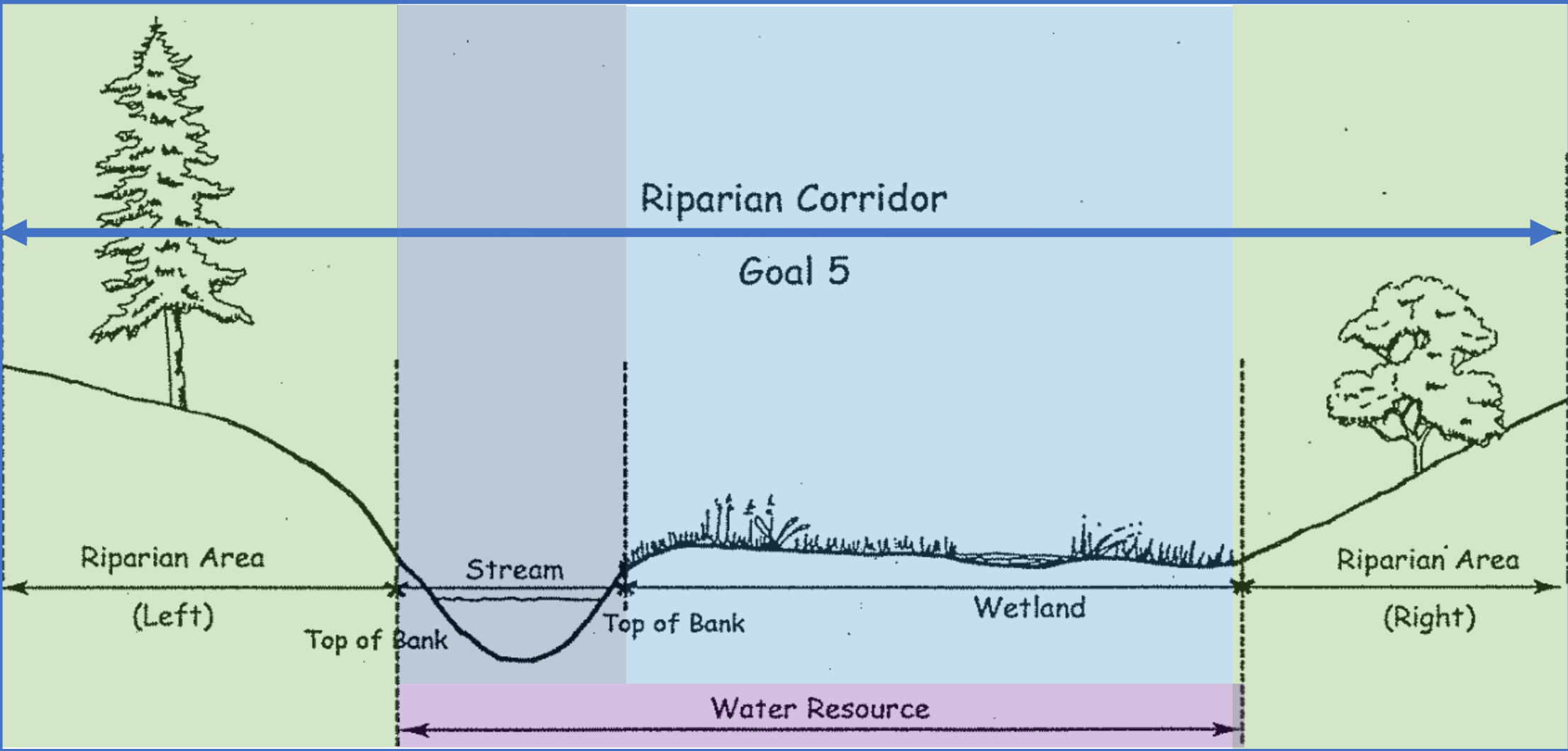
Statewide Planning Goals & Guidelines

- ❖ Goal 1 – Citizen Involvement
- ❖ Goal 2 – Land Use Planning
- ❖ Goal 3 – Agricultural Lands
- ❖ Goal 4 – Forest Lands
- ❖ **Goal 5 – Natural Resources, Scenic and Historic Areas, and Open Space**
- ❖ Goal 6 – Air, Water and Land Resources Quality
- ❖ Goal 7 – Areas Subject to Natural Hazards
- ❖ Goal 8 – Recreational Needs
- ❖ Goal 9 – Economic Development
- ❖ Goal 10 – Housing
- ❖ Goal 11 – Public Facilities and Services
- ❖ Goal 12 – Transportation
- ❖ Goal 13 – Energy Conservation
- ❖ Goal 14 – Urbanization
- ❖ Goal 15 – Willamette River Greenway
- ❖ Goal 16 – Estuarine Resources
- ❖ Goal 17 – Coastal Shorelands
- ❖ Goal 18 – Beaches and Dunes
- ❖ Goal 19 – Ocean Resources

What is Goal 5?

- ❖ Project focus is **Riparian Corridors**
- ❖ Requires local governments to adopt programs that will:
 - ❖ protect natural resources
 - ❖ conserve scenic, historic, and open space resources for present and future generations
- ❖ Establishes a two-part process
 1. **Local resource inventories** and
 2. Comprehensive plan policies (zoning and land-division ordinances)

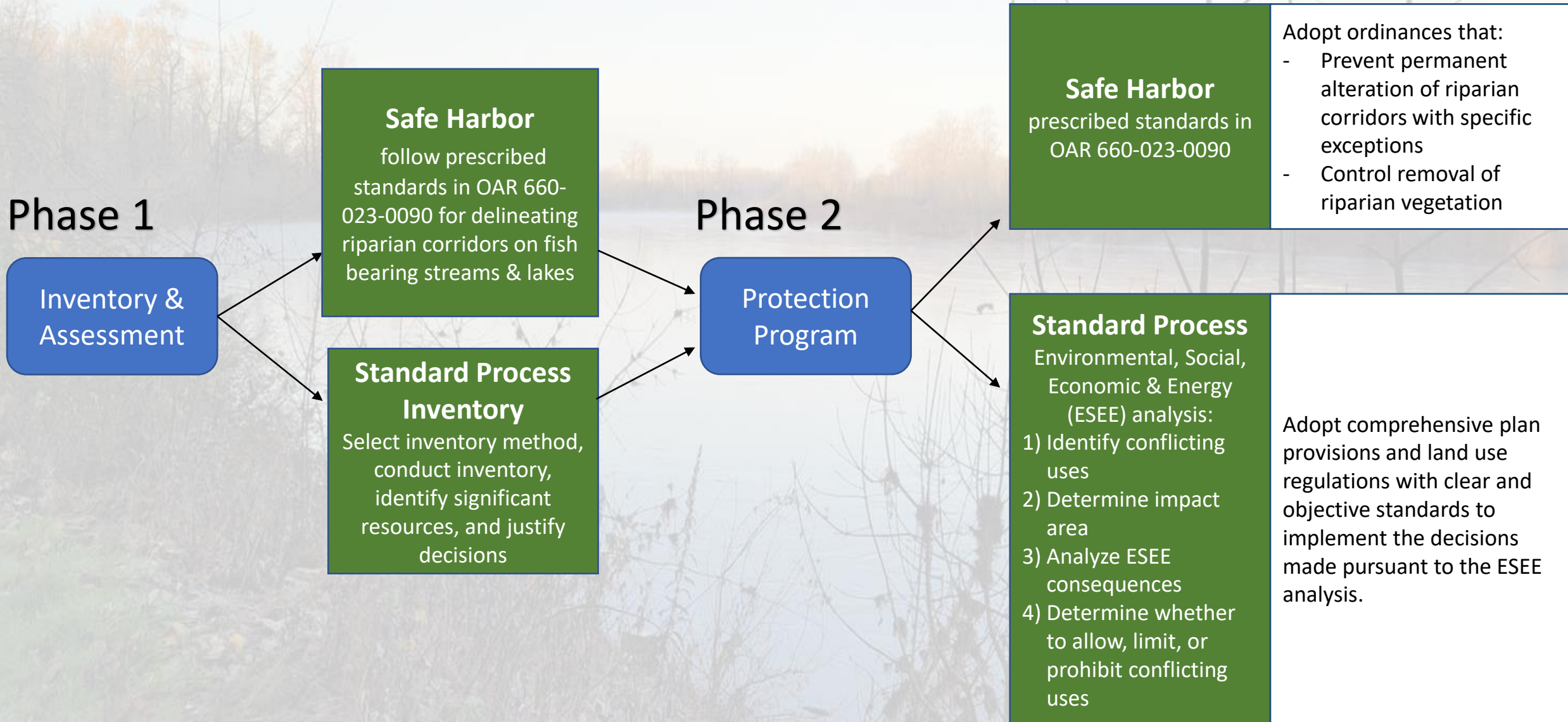
Riparian Corridor = a Goal 5 resource that includes the water areas, fish habitat, adjacent riparian areas, and wetlands within the riparian area boundary (OAR 660-023)



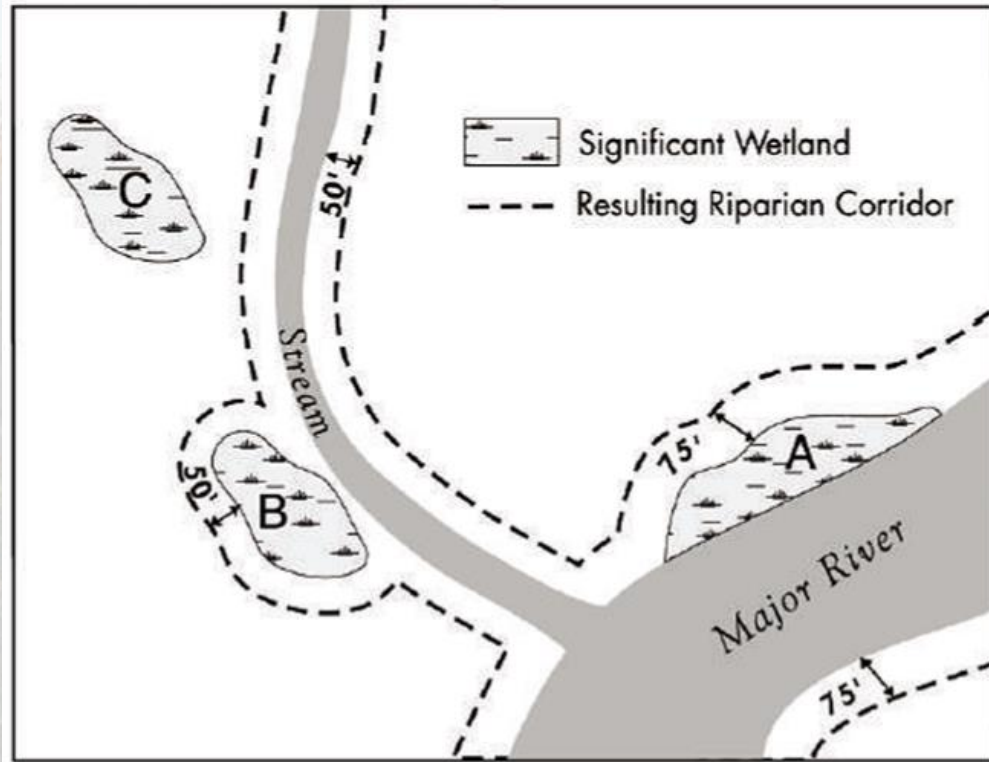
Why Plan for Riparian Corridors?

- ❖ Facilitates locally-appropriate and effective resource protection beyond state and federal permitting programs
- ❖ Reduces uncertainty for future development
- ❖ Optimizes values of Salem's streams to residents
- ❖ Safeguards functions of riparian corridors
- ❖ Safeguards fish and wildlife habitat
- ❖ Satisfies Statewide Planning Goal 5

Riparian Corridor Planning Process

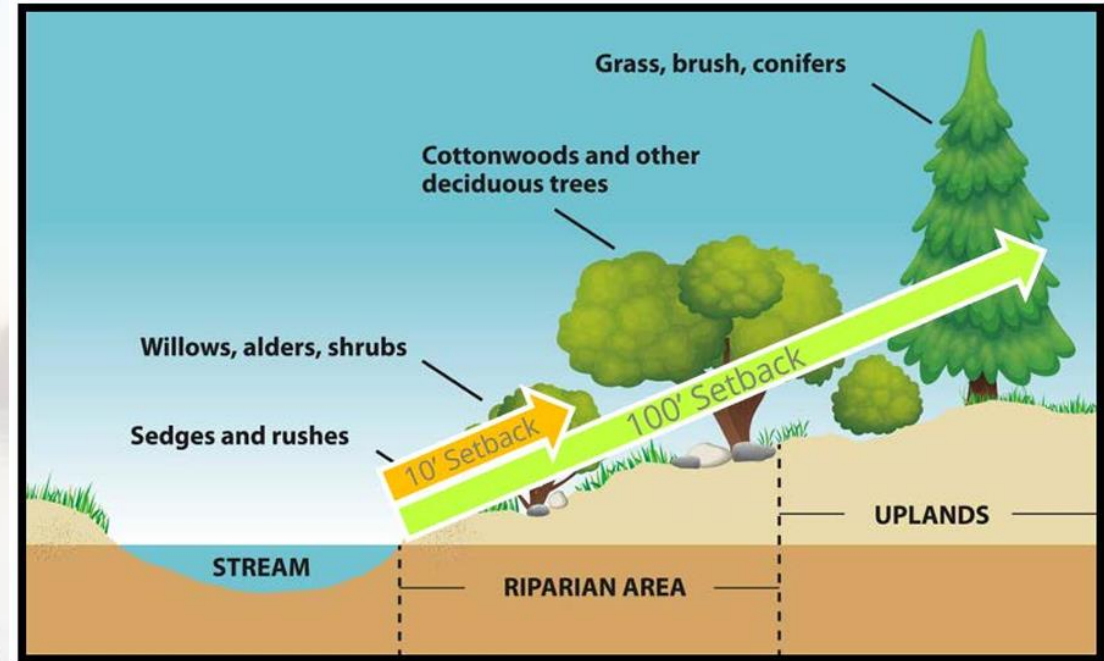


Safe Harbor:



- ❖ Standard setbacks from top of bank of all fish-bearing lakes and fish-bearing streams
- ❖ Normally applied only to fish-bearing streams, lakes, and adjacent wetlands
- ❖ May also be applied to non-fish bearing streams with justification

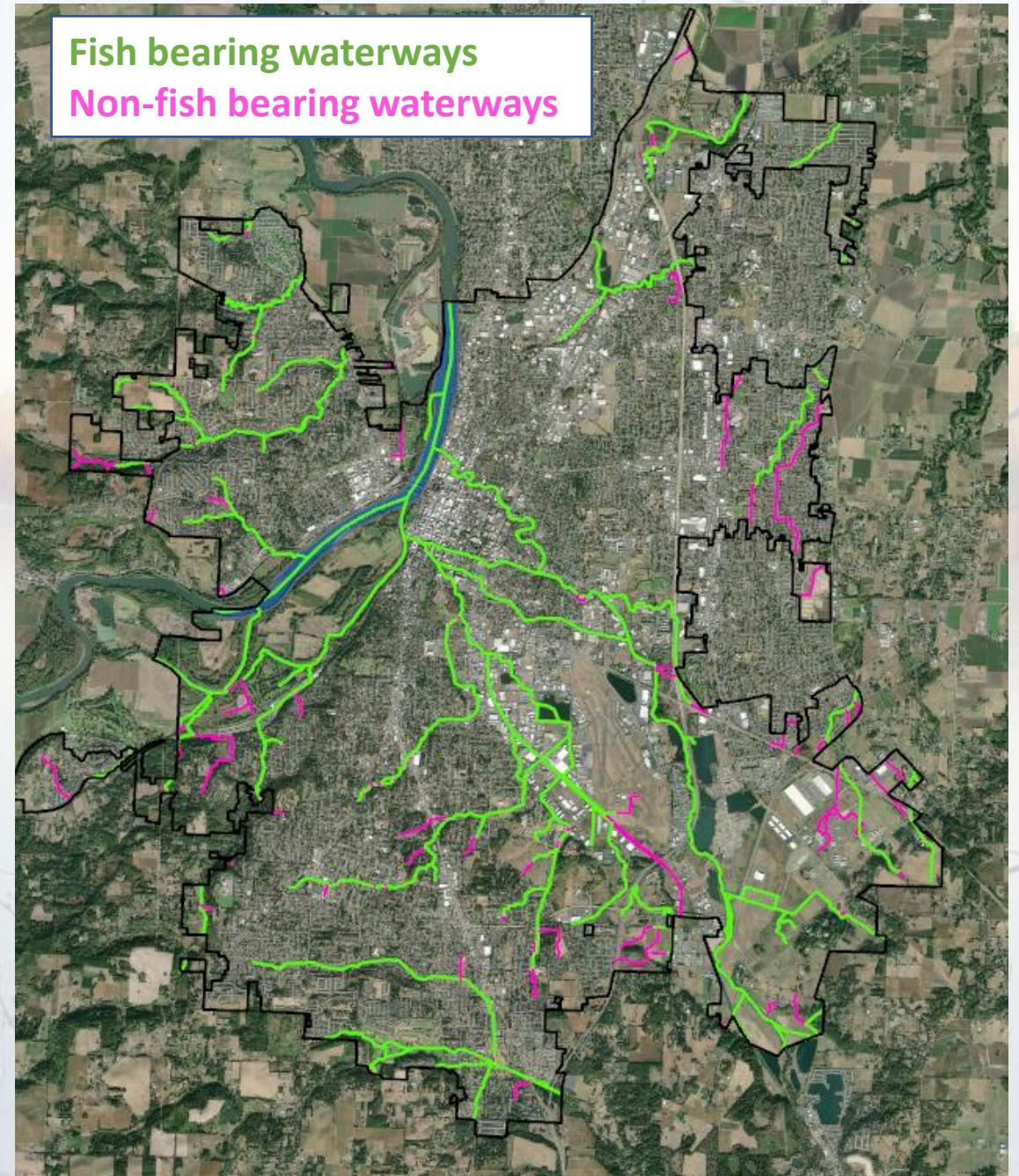
Standard Inventory:



- ❖ Inventory all tributaries
- ❖ Riparian setbacks may vary by reach depending on dominant riparian vegetation
- ❖ Provides site-specific information to inform appropriate protection of non-fish bearing streams and their headwaters

Salem's Waterways Preliminary Map

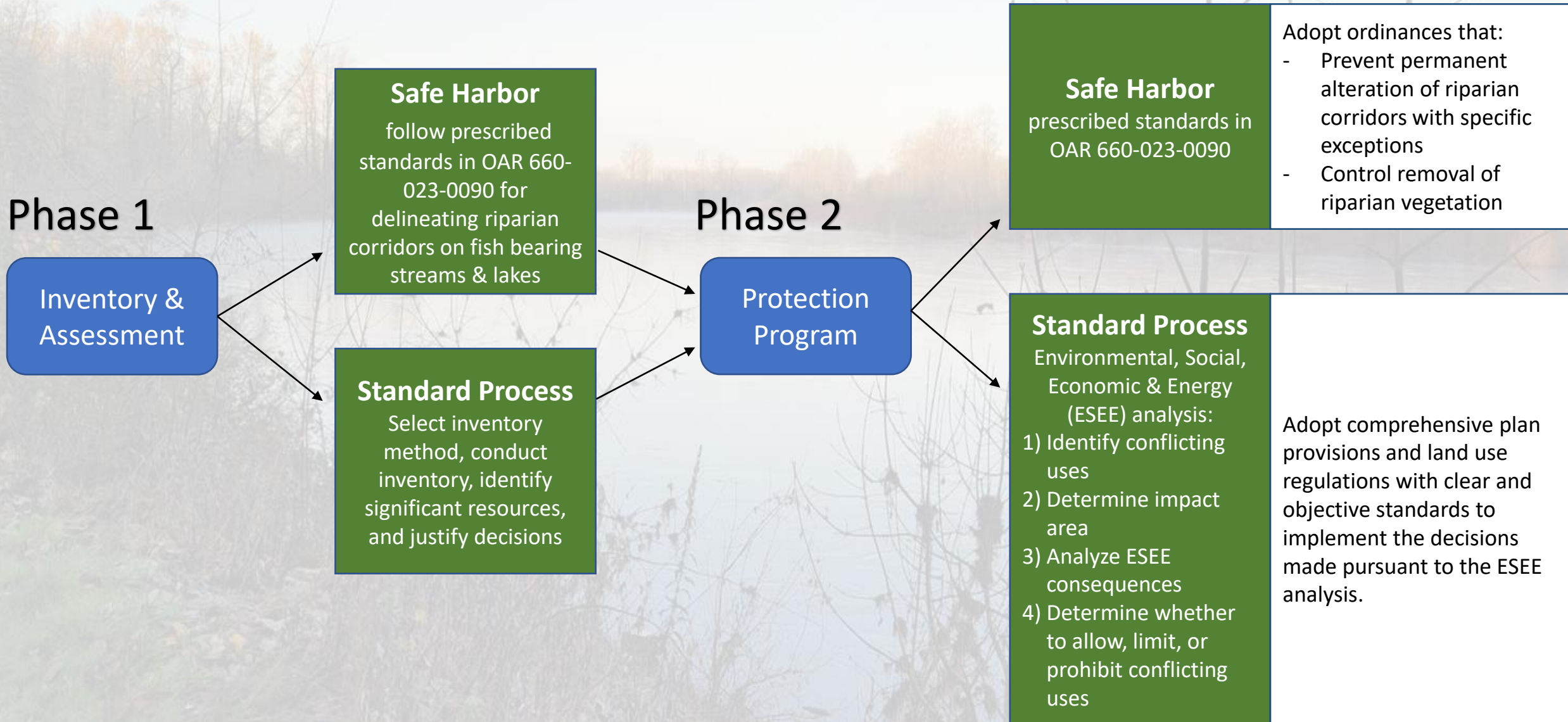
- ❖ 110.4 miles of waterways in the City
- ❖ 78.4 miles of fish-bearing waterways
- ❖ 32 miles of non-fish-bearing waterways



Proposed Approach

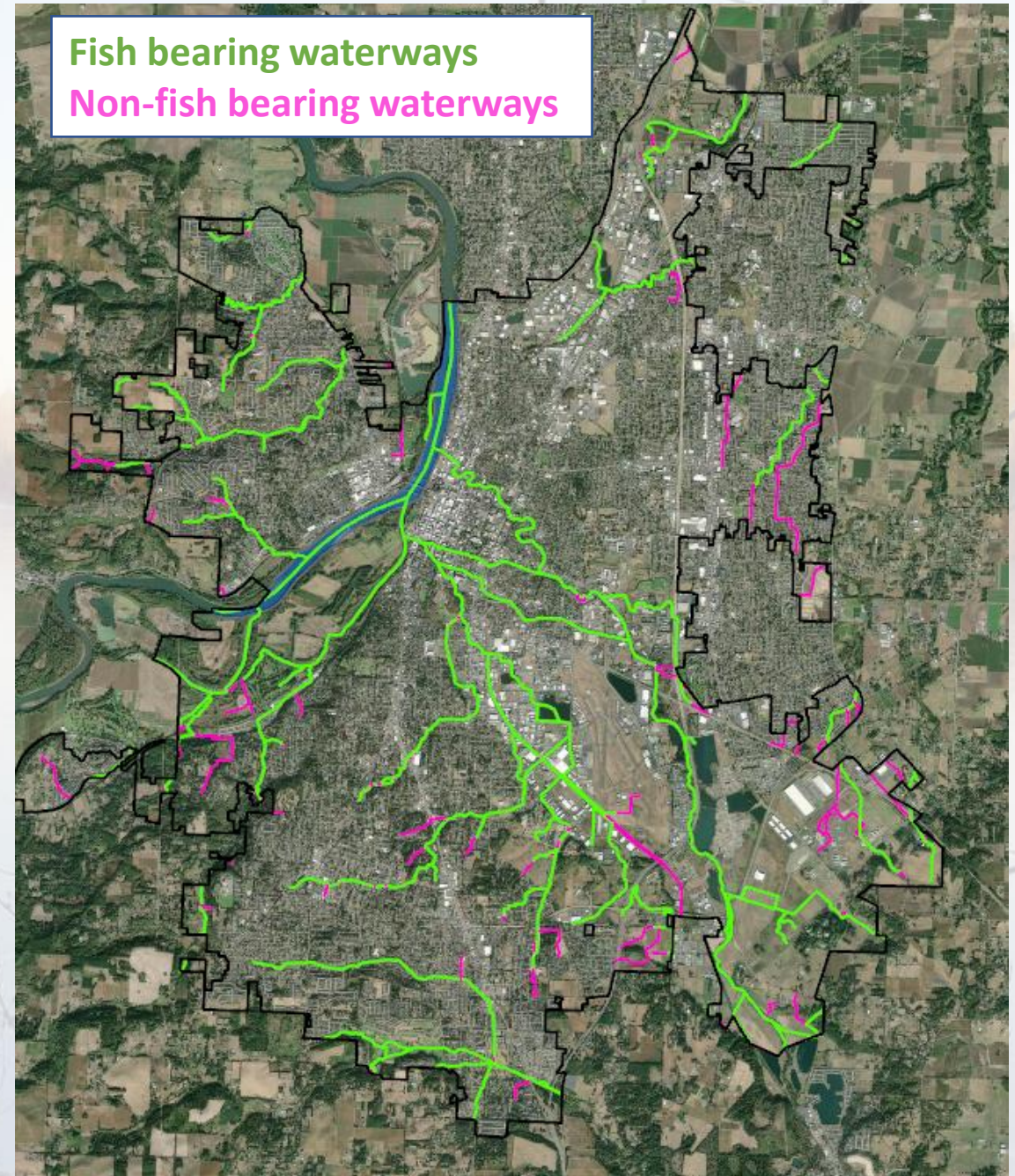
- ❖ Hire consultant to complete Standard Process Inventory
 - ❖ Fish bearing streams, and
 - ❖ Non-fish bearing streams
- ❖ Continue outreach to neighborhood and community groups
- ❖ Request public input on draft Inventory map
- ❖ Refine map based on public input
- ❖ Provide final map to Community Development Department for Phase 2 (Protection Plan)

Riparian Corridor Planning Process



Salem's Waterways Preliminary Map

- ❖ 110.4 miles of waterways in the City
- ❖ 78.4 miles of fish-bearing waterways
- ❖ 32 miles of non-fish-bearing waterways



Questions?

Jeffery Johnson

Natural Resources Planner

City of Salem | Public Works

Department

jdjohnson@cityofsalem.net

Office: 503-589-2041

Spare Slides



Safe Harbor vs. Standard Approach

Pros

Creates consistent and definitive standards throughout the City, increasing clarity, certainty, and equity for the City, property owners, and developers

May decrease the risk of litigation

Eliminates need for expensive inventory and analysis processes

Could be applied to non-fish bearing streams

Level of protection based on actual conditions

May be preferred by conservationists

Cons

Safe Harbor

A one-size-fits-all approach, not tailored to site specific conditions and may not offer the best protection for resources or property owners

Approach generally applied to only fish-bearing streams

Not necessarily sufficient to protect endangered fish and wildlife species under ESA

Standard Process

More room for subjectivity and interpretation

May increase risk of litigation

Current Riparian Protection Framework

Federal & State Regulations

- ❖ Federal Clean Water Act, Section 401 and 404
- ❖ Federal Endangered Species Act
- ❖ Oregon State Removal-Fill Law
- ❖ Oregon State Fish Passage Statutes

Intersecting Existing Local Regulations, Programs, Plans

- ❖ SRC 808 - Riparian Vegetation Protection
- ❖ SRC 601 – Provisions for Flood Hazard Reduction
- ❖ SRC 600 - Willamette River Greenway protections
- ❖ SRC 511 - Middle Housing waterway setback (100 feet)
- ❖ Floodplain Management Plan
- ❖ Stormwater Management Program
- ❖ Total Maximum Daily Load Implementation Plan
- ❖ Natural Hazards Management Plan

Goal 5 Resource Categories

❖ Riparian Corridors

- ❖ Wetlands
- ❖ Wildlife Habitat
- ❖ Greater Sage-Grouse
- ❖ Federal Wild and Scenic Rivers
- ❖ Oregon Scenic Waterways
- ❖ Groundwater Resources
- ❖ Approved Oregon Recreational Trails

- ❖ Natural Areas
- ❖ Wilderness Areas
- ❖ Mineral and Aggregate Resources
- ❖ Energy Sources
- ❖ Historic Resources
- ❖ Open Space
- ❖ Scenic Views and Sites