

APRIL 2019 – HIGH WATER EVENT



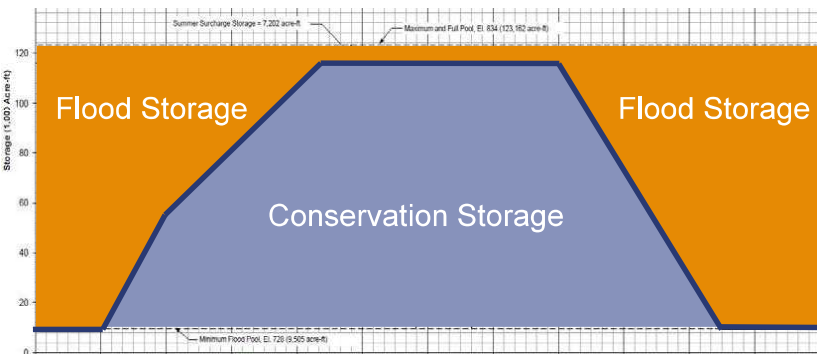
**US Army Corps
of Engineers®**
Portland District



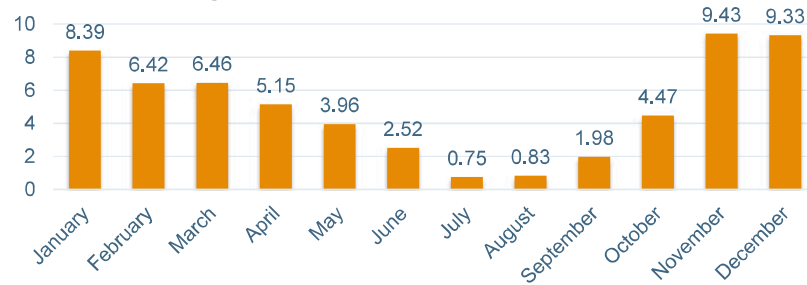


BALANCING FLOOD & CONSERVATION STORAGE

29



Average Precipitation at Fall Creek Dam by month, in inches (1981-2010)



Flood Risk Management



Navigation



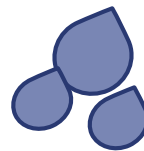
Water Quality



Hydropower



Water Supply



Fish & Wildlife



Recreation





Cumulative 10 Day Precipitation Forecast

April 3-13, 2019

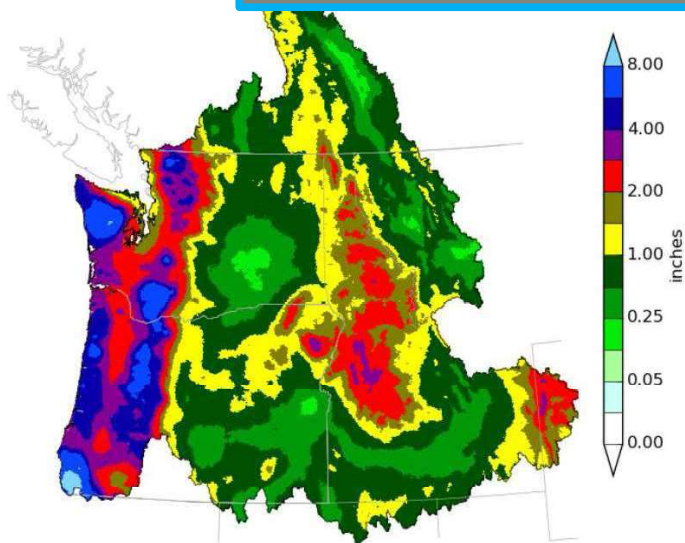


Northwest River Forecast Center
10 Day QPF, Ending 12Z, 04/13/19

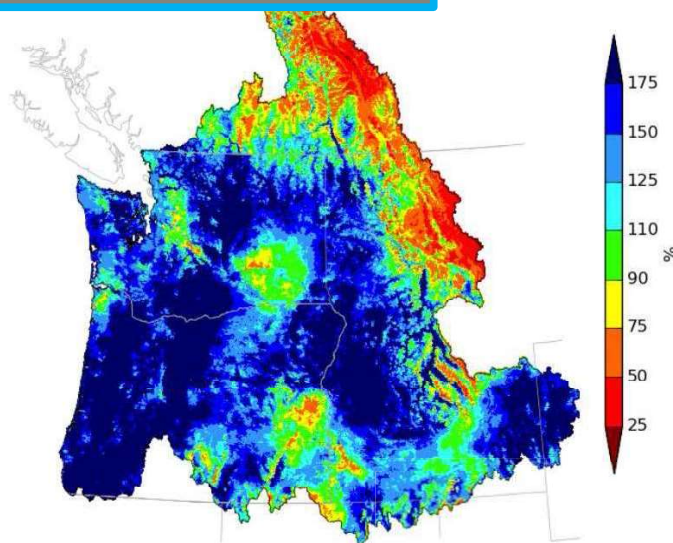


Northwest River Forecast Center
10 Day QPF (Percent of Climatology), Ending 12Z, 04/13/19

NWS Forecast – Wednesday 3 April, 1400hrs



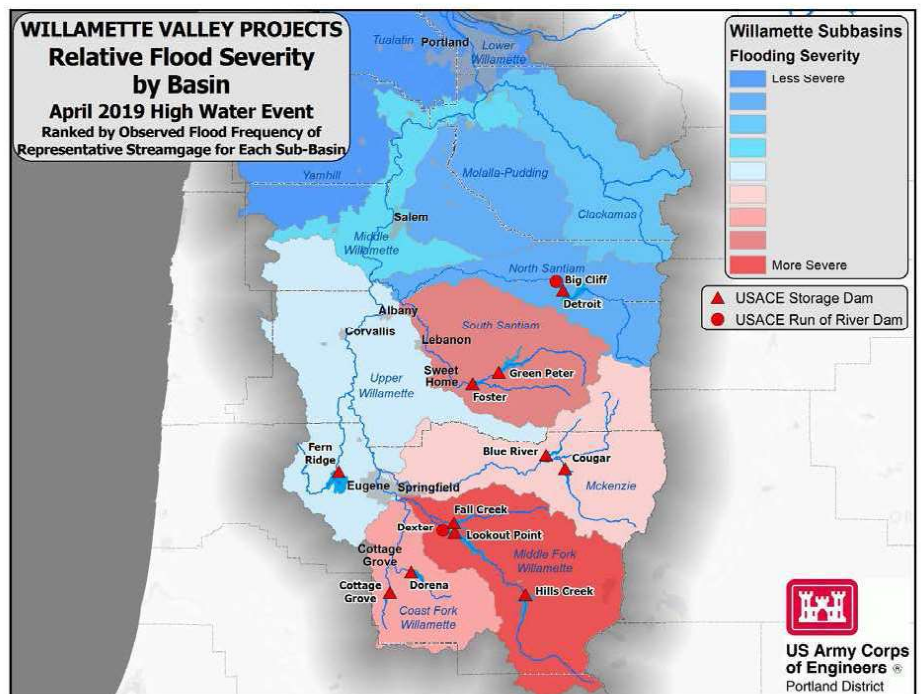
Creation Time: Wed Apr 3 22:05:01 UTC 2019



Creation Time: Wed Apr 3 22:05:46 UTC 2019

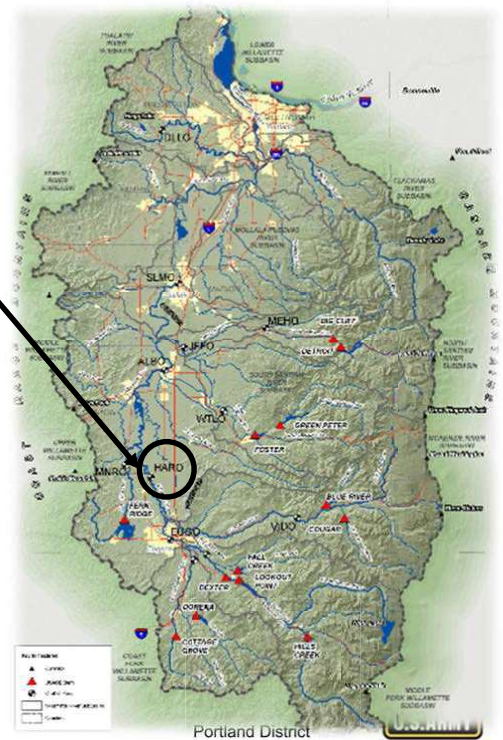
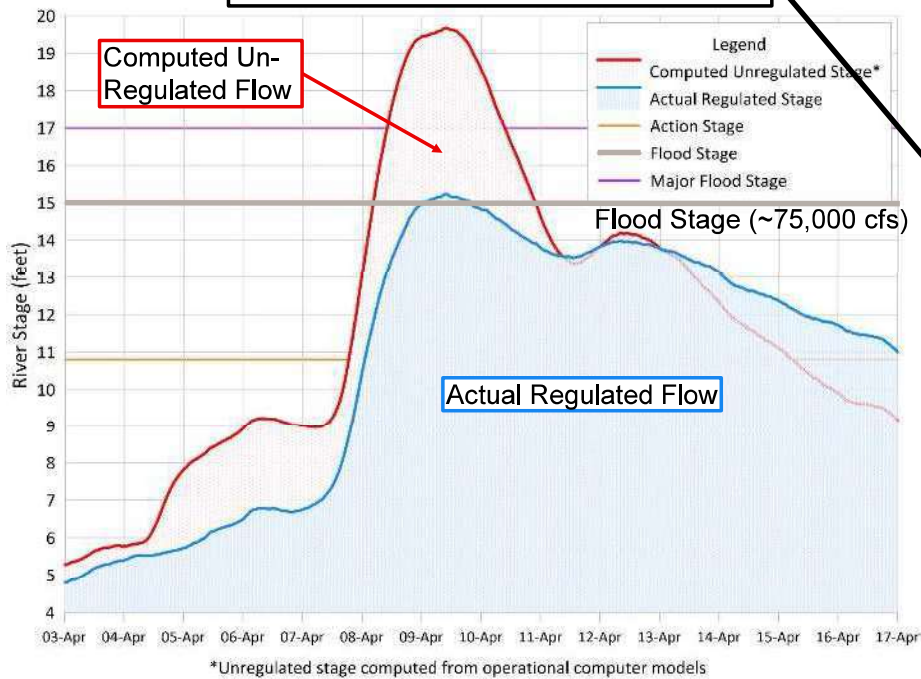
FLOODING GENERATED FROM APRIL STORMS

LOCATION	April 2019 Observed Peak Flow (cfs)	Highest Observed Flow since this date:	Rank of April 2019 flow since 1969 (Willamette Valley Project Dams completed)
GOSHEN	24,888	Nov-1996	3rd
JASPER	24,375	Dec-1964	1st
VIDA	25,475	Jan-2011	5th
HARRISBURG	77,975	Nov-1996	4th
MONROE	7,040	Jan-2006	9th
ALBANY	99,038	Nov-1996	5th
WATERLOO	25,100	Feb-1996	2nd
MEHAMA	16,788	Mar-2014	38th
JEFFERSON	61,675	Jan-2012	10th
SALEM	146,125	Jan-2012	9th

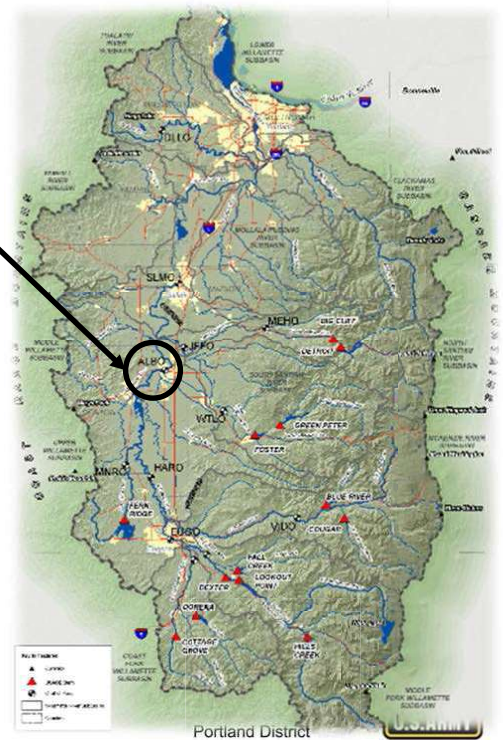
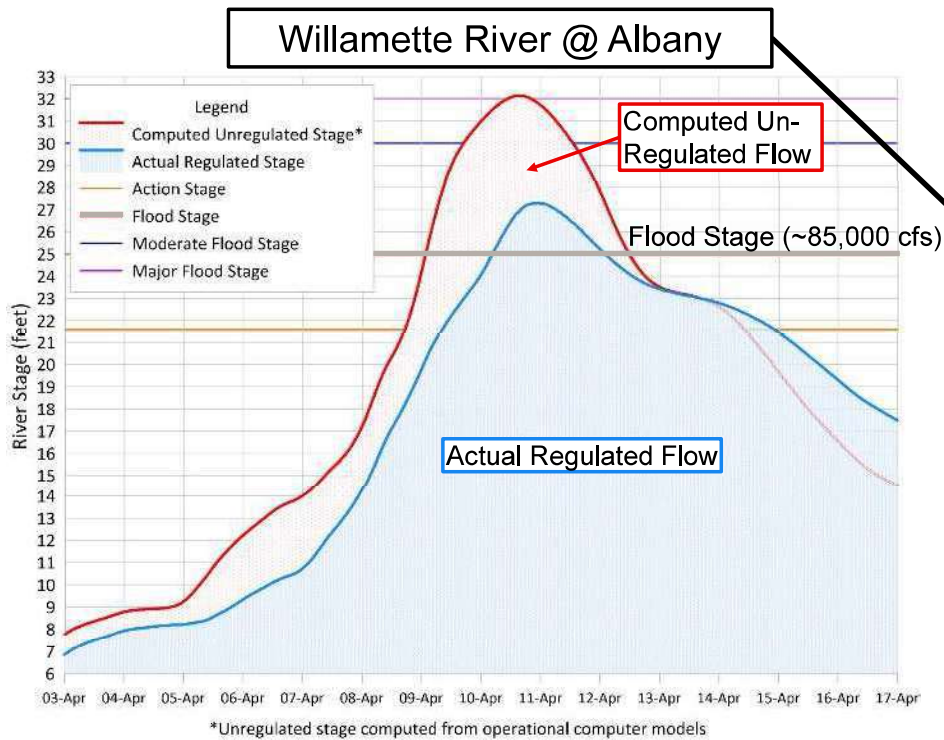


WILLAMETTE RIVER FLOWS – APRIL 2019

Willamette River @ Harrisburg



WILLAMETTE RIVER FLOWS – APRIL 2019



WILLAMETTE RIVER FLOWS – APRIL 2019

