

# BIG CLIFF REMEDIATION PROJECT



**US Army Corps  
of Engineers®**  
Portland District



# BIG CLIFF REMEDIATION PROJECT

- CERCLA – process to manage risk around environmental liabilities.
- USACE is working on the Feasibility Study Phase of the CERCLA Process
- Fish tissues collected from Big Cliff Reservoir and Detroit Lake. Results received March 2020 – comparative analysis underway.
- Alternative Screening Memo underway to develop and screen remedial alternatives addressing risks posed by contaminants of concern.
- Next Steps: Inform public on results from fish tissue sampling (July 2020). Complete Feasibility Study Report (early 2021).



Image 1: News release with all necessary information and background on Big Cliff Remediation project on-site.



Image 2: Notice sign up at Big Cliff Reservoir boat ramp, asking the public to refrain from swimming, disturbing sediments, etc., and to avoid fish consumption while the Corps continues their investigation of risks from contaminants.



Image 3: Close up of Notice sign posted on-site at Big Cliff Reservoir.

## Summary:

The Corps along with ODFW collected fish tissue from Big Cliff Reservoir and Detroit Lake in July/August 2019. Fish tissues were sent to laboratories to be analyzed for contaminants of concern. Sample results have been received from the laboratory and are being reviewed and compared to screening levels. Results will be available to the public in July 2020. The Corps is asking the public to avoid consumption of aquatic organisms and the disturbance of sediment in Big Cliff (i.e. swimming, wading, etc.) while we continue to investigate the extent of risks. The Corps is also preparing a Feasibility Study which is expected to be finalized in early 2021.



# **WILLAMETTE VALLEY SYSTEM OPERATIONS & MAINTENANCE (O&M) EIS AND ESA CONSULTATION**



**US Army Corps  
of Engineers®**  
Portland District



# WILLAMETTE VALLEY SYSTEM O&M EIS AND ESA CONSULTATION

## Environmental Impact Statement (EIS) initiated in 2019

- In accordance with National Environmental Policy Act (NEPA)
- Addresses continued operations and maintenance (O&M) for the Willamette Valley
- Within context of existing authorized project purposes

## Why the need?

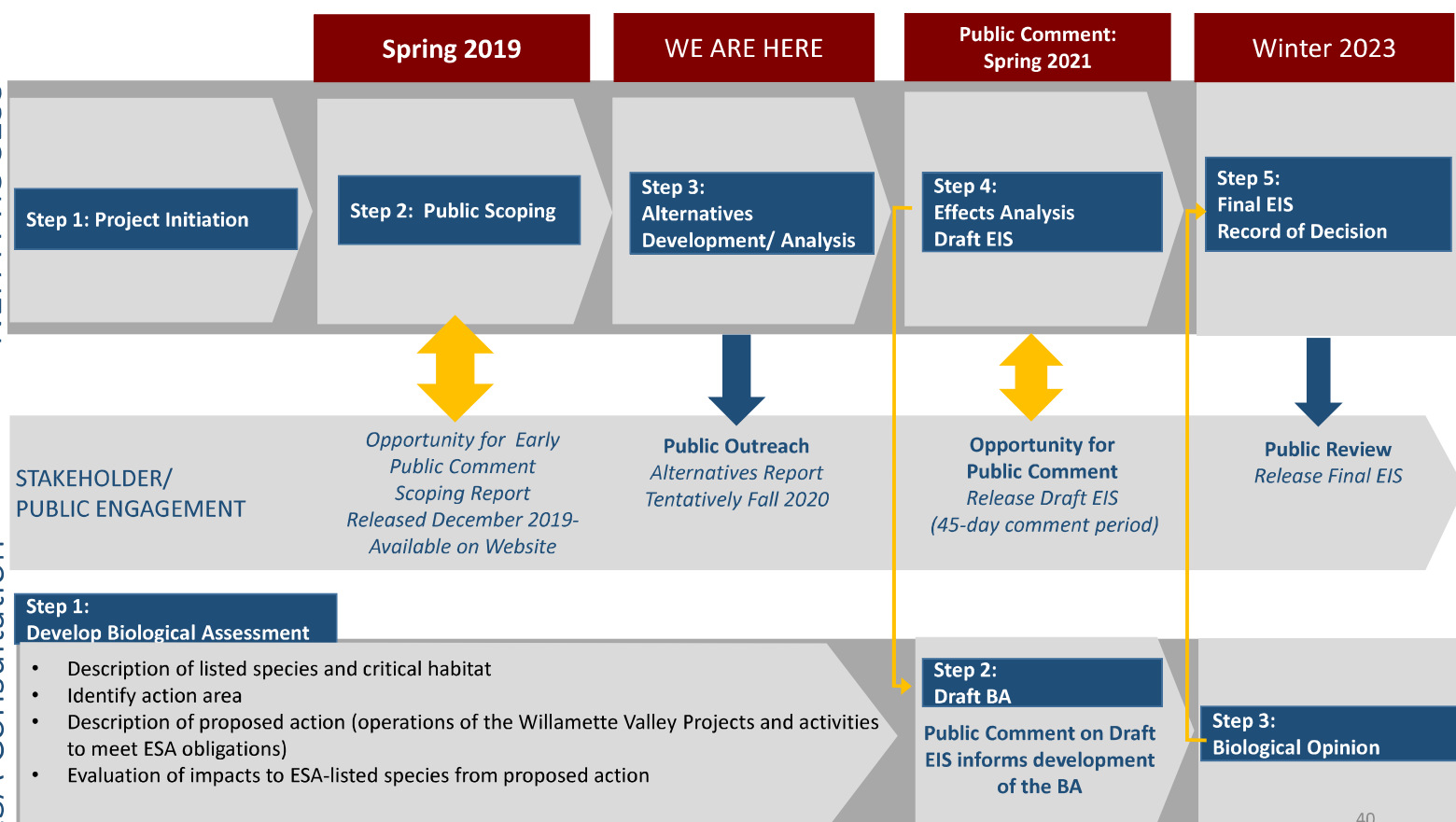
- Operations and structural changes have been made since the previous 1980 system-wide EIS to address effects of the dams on endangered fish
- Purpose and need includes meeting Endangered Species Act (ESA) obligations to avoid jeopardy

## How they relate

- Re-initiated formal consultation under Section 7 of the Endangered Species Act (ESA)
- NEPA process will inform the ESA consultation process
- Results of the ESA consultation process will be used to prepare a final EIS and Record of Decision

## Schedule

- Both NEPA and ESA consultation schedules may change



## **WE ARE HERE: ALTERNATIVES DEVELOPMENT**

### **Alternatives Development**

- Driven by Spring 2019 Public Scoping meetings
- Scoping comments published in December 2019
- Development of “Action Alternatives” in collaboration with Tribes, Federal and State agencies
- Alternatives Report is expected later this fall

### **Detroit Downstream Passage EIS**

- Re-evaluating inclusion in the “No Action” alternative due to funding uncertainty
- Data from Detroit EIS scoping still being used to inform Willamette Valley EIS

### **Other Considerations for Stakeholders**

- Alternatives include a wide range of structural and non-structural options
- Trade-off analysis will inform direction & decisions, and inform new BiOp
- Stakeholder comments will be solicited and considered for the draft System EIS

# DETROIT DAM DOWNSTREAM FISH PASSAGE PROJECT

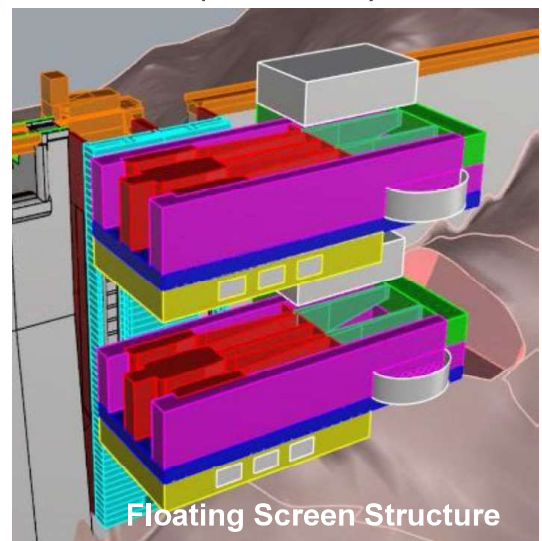
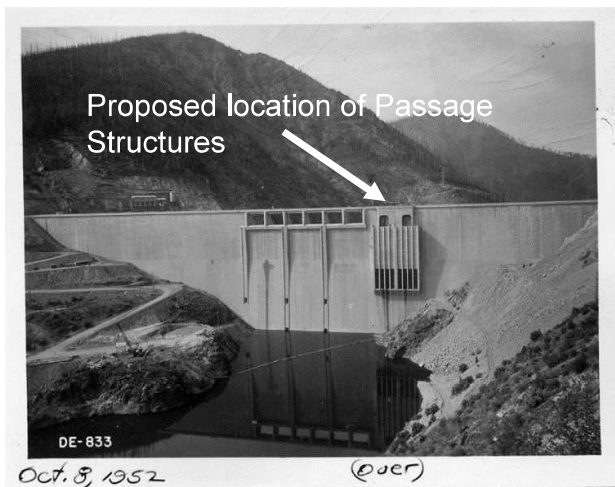


**US Army Corps  
of Engineers®**  
Portland District



## DETROIT DAM TEMPERATURE CONTROL & DOWNSTREAM FISH PASSAGE PROJECT

Floating Screen Structure (95% DDR Phase) – attached to Water Intake Tower (P&S Phase)



US Army Corps  
of Engineers®  
Portland District





## WILLAMETTE BASIN REVIEW (REALLOCATION STUDY)



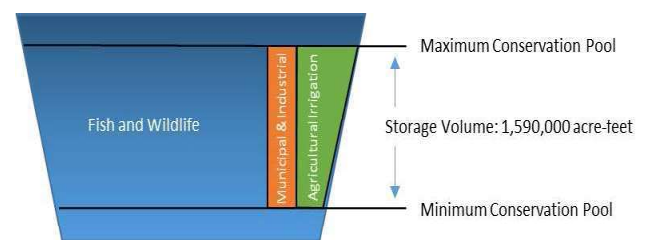
## WILLAMETTE BASIN REVIEW

### OVERVIEW

- Evaluated reallocation of 1.59 M acre-feet of joint-use conservation storage to specific authorized purposes.
- Balances current and future demands for multiple needs, including fish and wildlife, irrigation, and M&I.

### CURRENT STATUS

- Signed Chief's Report Dec 2019 Recommends:
  - Reallocating existing joint-use conservation storage to three specific uses.
  - Using an adaptive management plan for when the reservoirs don't refill.
- Draft FONSI states the Corps will implement the reallocation consistent with the Reasonable and Prudent Alternative in NMFS 2019 Biological Opinion
- Project in review by ASA(CW)



Allocation Use Category	Reallocation Volume (acre-feet)	Percent of Conservation Storage Pool
Fish & Wildlife (F&W)	1,102,600	69
Municipal & Industrial (M&I)	159,750	10
Agricultural Irrigation (AI)	327,650	21
Total	1,590,000	100

### CONGRESSIONAL INTEREST

- There has been and continues to be Congressional interest in this project.

## SUMMARY

Dynamic environment / competing demands

Commitment to our core mission and to optimizing available resources

Stakeholder voices are important

Future looks different – not sure how...



46



US Army Corps  
of Engineers®  
Portland District



## FOR MORE INFORMATION

EIS Website: <https://www.nwp.usace.army.mil/Locations/Willamette-Valley/Evaluation/>

Willamette Valley Website: <https://www.nwp.usace.army.mil/Locations/Willamette-Valley/>

About the Corps (Portland District web site): [www.nwp.usace.army.mil](http://www.nwp.usace.army.mil)

Portland District Water Management Reservoir Regulation and Water Quality Section <http://www.nwd-wc.usace.army.mil/nwp/wm/>

Videos of the Willamette system: <http://www.youtube.com/user/PortlandCorps>

Water Data (DBQuery): <http://www.nwd-wc.usace.army.mil/dd/common/dataquery/www/>

River Flow (real time and forecasted)  
[water.weather.gov](http://water.weather.gov) and <https://www.nwrfc.noaa.gov/rfc/>

Still have questions? Please email: [cenwp-pa@usace.army.mil](mailto:cenwp-pa@usace.army.mil)

